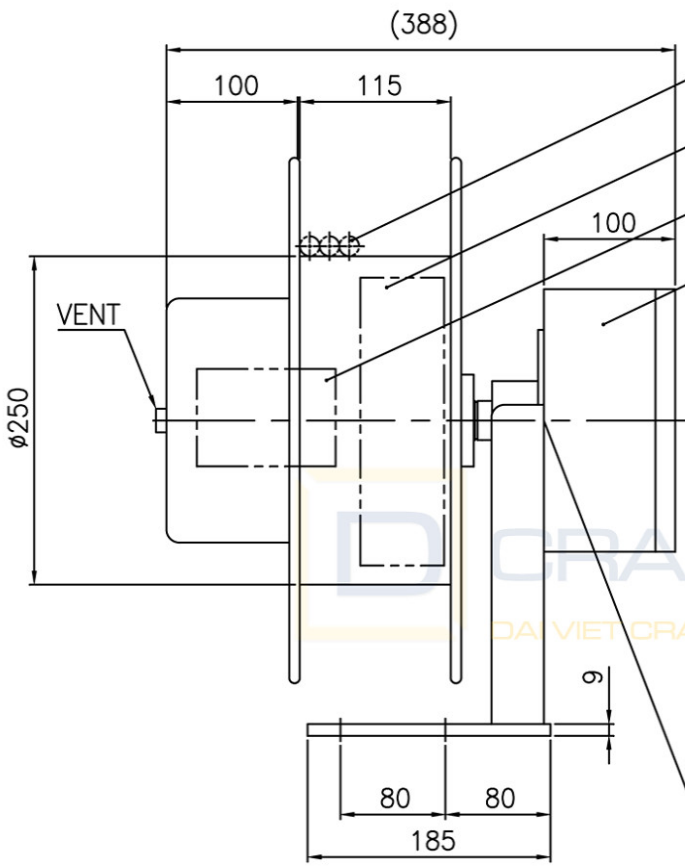
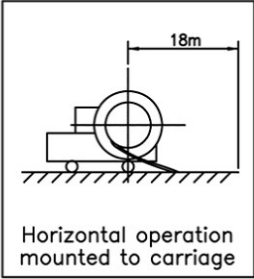
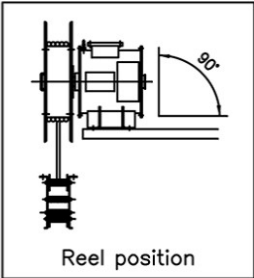
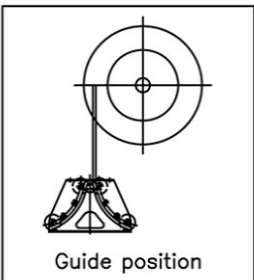
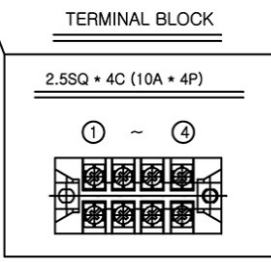
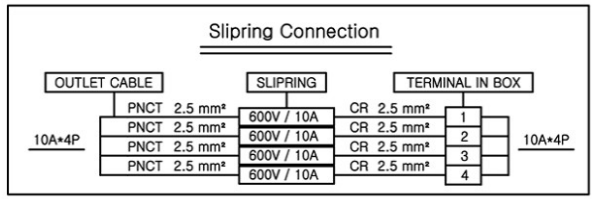
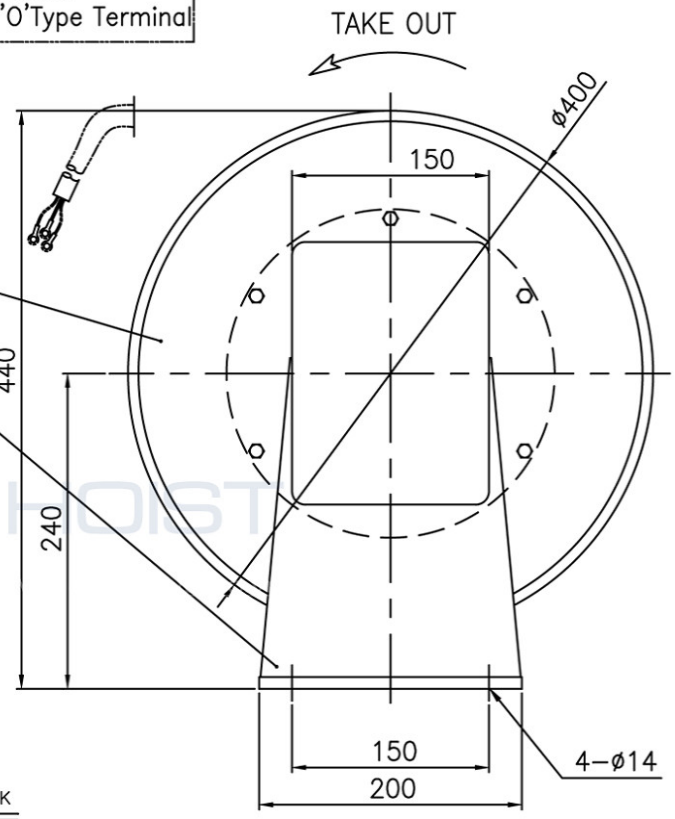


MARK	REVISIONS NO	REASONABLE RVISIONS	DATE	DWN	APVD



Outlet:
'O' Type Terminal

- 1
- 2
- 3
- 4
- 5
- 6



SPECIFICATION

- 1. Cable
 - o PNCT 2.5 sq x 4c
 - o Size : approx. 14.4mm
 - o Weight : approx. 0.3 kg/m
 - o Length : 20 M
- 2. Winding Length : 18 M
- 3. Winding Speed : max. 20 M/MIN
- 4. Winding Torque : 1 Kg.m
- 5. Slip Ring : 10A x 4P
- 6. Paint Color : MUNSELL No. 7.5 BG6/1.5 (In Door-60um)
- 7. Setting Height : Max. 1.0 m from G.L.
- 8. Q' ty : 1 Set

ITEM	PARTS NO.	PART NAME	MATERIAL	Q'TY	REMARKS
6		FRAME	SPHC	1	
5		DRUM	SPCC	2	
4		TERMINAL BOX	PLASTIC	1	
3		SLIP RING	C3771	4	
2		SPRING	ATX	2	
1		CABLE	PNCT	20M	

PROJECTION	DIMENSIONS	SCALE	MODEL
3rd ANGLE	METRIC (mm)	1 : 6	ECC-220-4
CUSTOMER			PART NAME
			ASS'Y
MODEL COLOR	7.5 BG6/1.5		PART NO.
			Z825-8000
DRAWING	DESIGN	CHECK	APPROVAL
SIGN	P.S.Y		
DATE	2017.3.7		



A4(210X297)